

The Cypress OSM-2200 is an embedded OSDP module for Wiegand RFID readers intended for use by manufacturers.

With its small form factor, the embedded OSM-2200 module is a simple solution for manufacturers who want to supply their customers with OSDP readers. Adding the module to Wiegand readers allows readers to support the Security Industry Association's OSDP protocol.

The OSM-2200 essentially converts a Wiegand reader to an OSDP reader by converting Wiegand data and reader I/O to OSDP protocol messages. It communicates with the Access Control Unit (ACU) as a Peripheral Device (PD) on the OSDP network.

Note: This product is intended for use by hardware manufacturers. For other OSDP-Wiegand conversion applications, please visit CypressIntegration.com/OSDP.



OSM-2200_PS_220609

Specifications

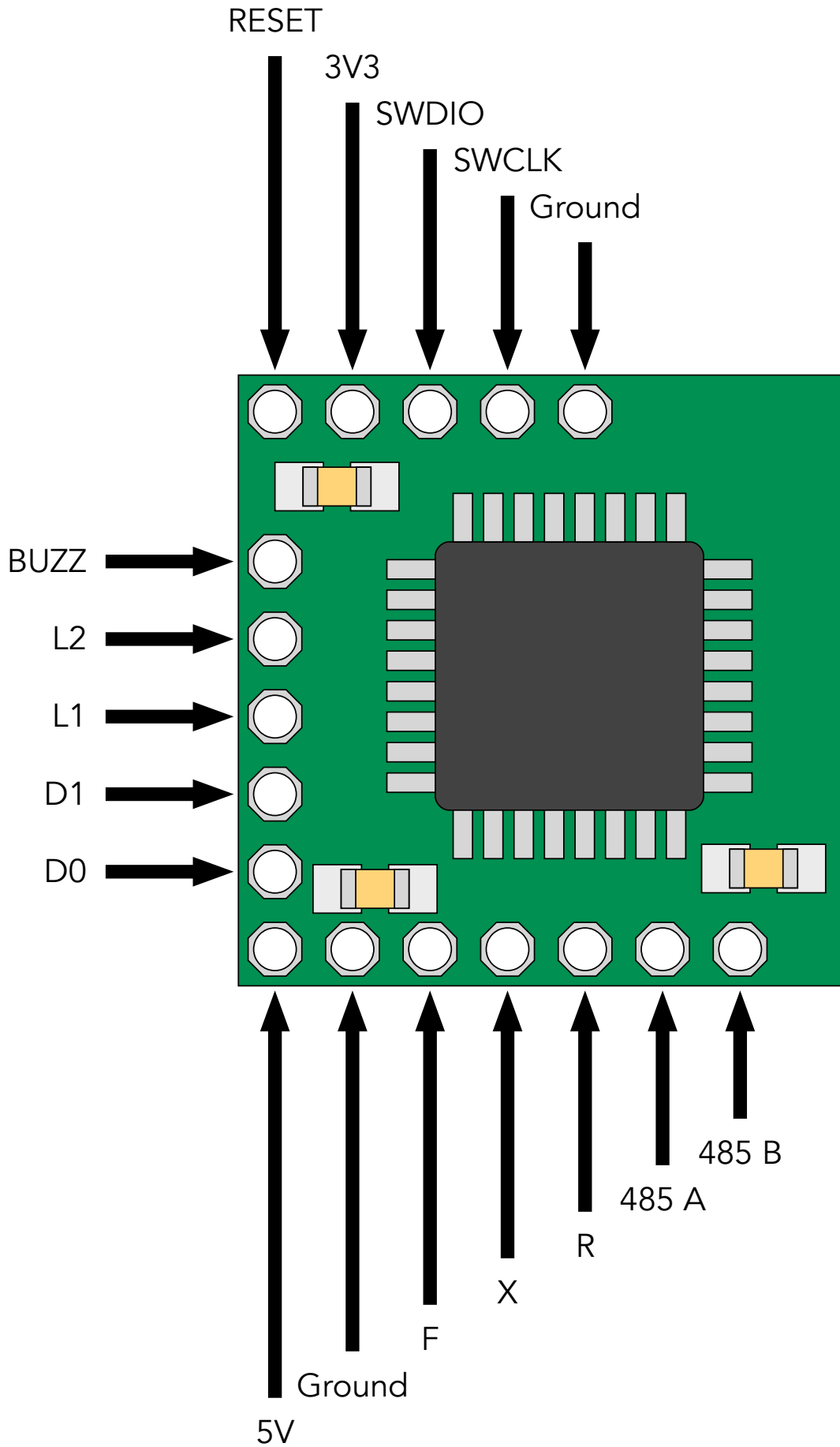
Part Number	Part Number	OSM-2200
	UPC	816684004575
Physical	Physical Dimensions (L x W x H)	0.618 x 0.610 x 0.177 inches 15.7 x 15.5 x 4.5 mm
Environmental	Operating Temperature Range	-40°F to 185°F -40°C to 85°C
	Enclosure Rating	Not rated for water or dust intrusion
Electrical	Supply Voltage	4.75 - 5.50 Vdc (5.0 V typical) @ 20 mA typical (70 mA Max)
Supported I/O	One or more LED outputs	
	Buzzer output	
	Three or more auxiliary I/O pins	
	Configurable I/O pins. I/O pins can be configured as Digital I/O, Analog inputs, or PWM outputs	
Additional Features	2 mm header spacing	
	Supports OSDP File Transfer for uploading firmware and configuration files	
	Supports Keypad readers	

Configurable I/O

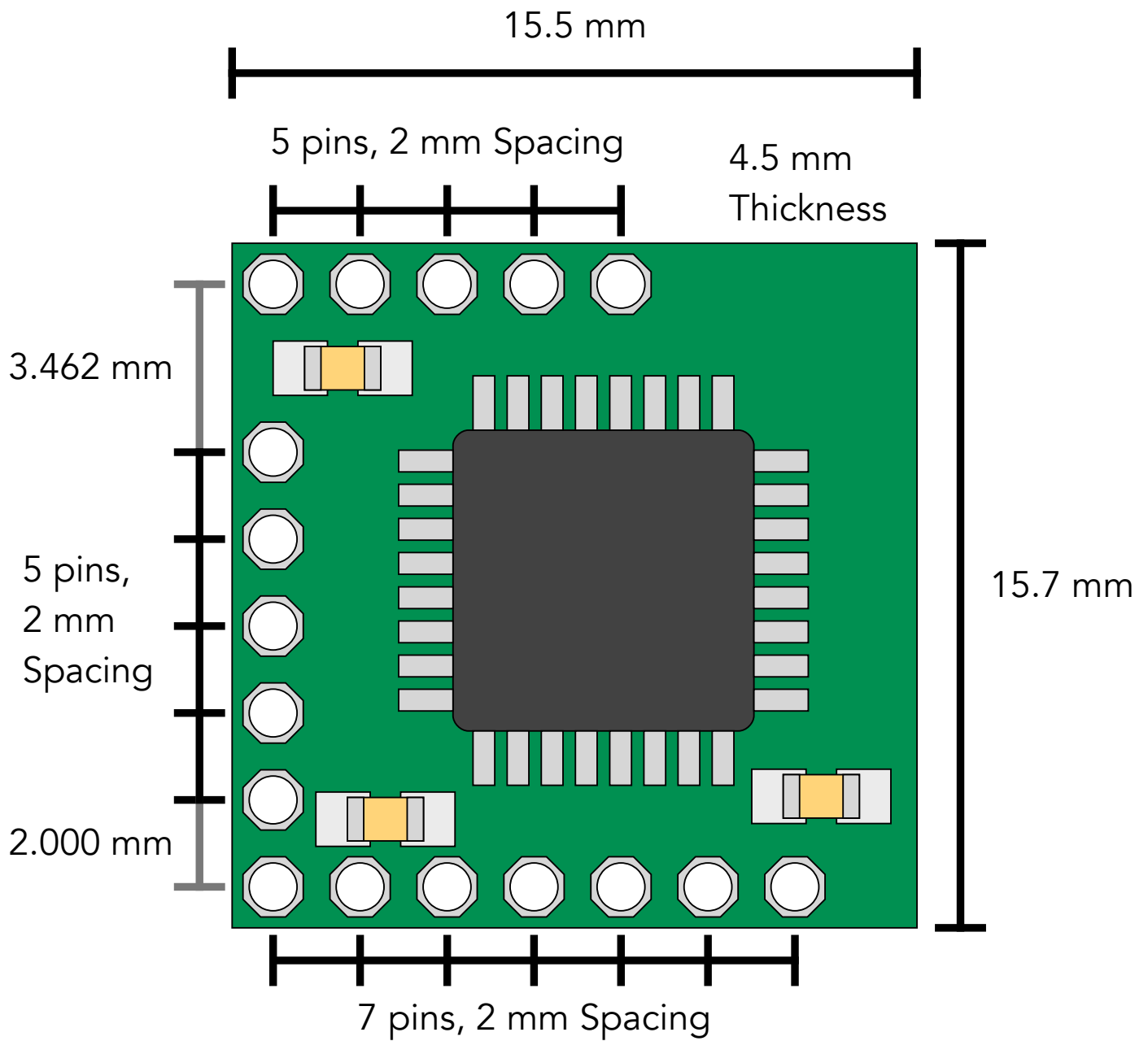
The OSM-2200 has 8 configurable I/O pins. These I/O pins can be configured as digital inputs, analog inputs, digital outputs, or PWM outputs. Certain I/O pins are designated for specific functions, however, they are still able to be configured as needed. See the table below for the configuration options for each I/O pin.

I/O Pin	Designated Function	Digital Input	Analog Input	Digital Output	PWM Output
BUZZ	Buzzer Digital Output	X		X	X
L2	LED 2 Digital Output	X	X	X	X
L1	LED 1 Digital Output	X	X	X	X
D1	Wiegand Data 1 Digital Input	X	X	X	X
D0	Wiegand Data 0 Digital Input	X	X	X	X
F	Unassigned	X		X	X
X	Unassigned	X	X	X	
R	Unassigned	X	X	X	

OSM-2200 Pin Designations



OSM-2200 Dimensions



Overall dimensions (length, width, thickness) are approximate and may vary.